

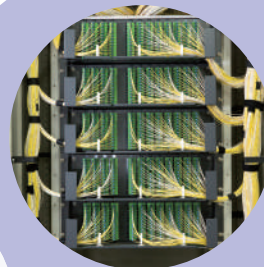
# Lynx-CustomFit™ Splice-On Connector



## Agile Solutions Fibre Optic Termination



Full lineup



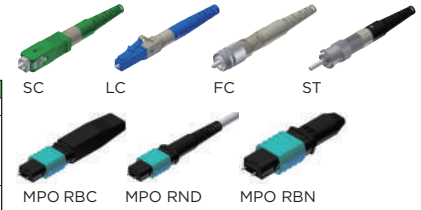
Perfect length



No pre-survey

# Lynx-CustomFit™ Splice-On Connector

- Low insertion loss
- Low return loss for analogue systems, etc.
- Wide temperature stability



## Standards and Optical Performance

	SC	LC	FC	ST	Q8MPO / 12MPO
<b>Interface Standard</b>	IEC61754-4	IEC61754-20	IEC61754-13	IEC 61754-2	IEC 61754-7-1
<b>Insertion Loss (against master plug)</b>	SMF: Ave. 0.2dB, Max. 0.3dB MMF: Ave. 0.1dB, Max. 0.25dB				SMF(Std Loss) : Max. 0.75dB SMF(Low Loss): Max. 0.4dB MMF(Low Loss): Max. 0.4dB
<b>Return Loss (against master plug)</b>	SMF: ≥ 60dB (APC), ≥ 55dB (UPC) MMF: ≥ 30dB (PC)				SMF: ≥ 55dB

## Lineup for Single Fibre Connector (Lynx-CustomFit™ Ver.3)

Connector type	Polishing type	Fibre type	Connector color	Fibre / Cord diameter	Boot type
SC LC FC ST*1	APC	SM	Green	250µm/900µm *2 2mm with 900µm Tight Buffer 2mm with 900µm Loose Buffer 3mm with 900µm Tight Buffer	Standard boot Short boot *3
	UPC	SM	Blue		
	PC	MM50(OM2)	Black		
		MM50(OM3)	Aqua		
		MM62.5(OM1)	Beige		

\*1 ST connector is available for SM(UPC polishing) and MM(PC polishing).

\*2 250µm/900µm is applicable for the following; 250µm, 900µm Tight buffer, 900µm Loose Tube and 900µm Loose Buffer

\*3 Short boot is available for SC and LC type of 250µm/900µm tight buffer.

## Lineup for MPO Connector (Lynx-CustomFit™ Ver.2)

Guide pin	Fibre/Polishing type	Connector color	Cord diameter
With / Without guide pin	SM Low loss	Yellow	RBN: 8c/12c Bare Ribbon RND: 8c/12c Round cord (φ3mm) RBC: 8c/12c Ribbon cord
	SM Standard loss	Green	
	MM50(OM2) Low loss	Black	
	MM50(OM3) Low loss	Aqua	

## Assembly Tool

Tool Name [Part No.]	An appropriate Sumitomo Electric fusion splicer	Fibre cleaver [FC-8R]	Jacket remover [JR-M03]	Thermal jacket remover [JR-7]	Sheath splitter [LYNX-CORDTOOL-1.6-2.4]	Sheath splitter [LYNX-CORDTOOL-2.0-3.0]	Kevlar snips [N-57]	ST assembly tool [LYNX-ST-AT-01]
Appearance								
Single Fibre	● with all current models	●	●	—	● for 1.6/2.4mm cord	● for 2/3mm cord	—	● for ST connector
MPO	● with all current models	●	●	● for φ0.2~0.4mm fiber	—	—	—	● for ST connector
	● with ribbon fibre splicer	●	—	●	—	● for round cord / ribbon cord	●	—
	● with ribbon fibre splicer	●	—	●	—	—	—	—

## Fibre Holders for Single Fibre Connector (Lynx-CustomFit™ Ver.3)

Type	Part No. Left side (Setting fibre / cord)	Part No. Right side (Setting ferrule sub-assembly)
250µm fibre	FHS-025 or LYNX-S-LB	LYNX-C-PLS (Plastic, Standard) * or LYNX-C (Metal, Option)
900µm Tight Buffer	FHS-09 or LYNX-S	
900µm Loose Tube 900µm Loose Buffer	LYNX-S-LB	
2mm cord with 900µm Tight Buffer	LYNX-S	
2mm cord with 900µm Loose Buffer	LYNX-S-LB	
3mm cord with 900µm Tight Buffer	LYNX-S	

\* 1 pc of LYNX-C-PLS holder is supplied with every 100 connectors.

## Fibre Holders for MPO Connector (Lynx-CustomFit™ Ver.2)

Type	Part No. Left side (Setting fibre / cord)	Part No. Right side (Setting ferrule sub-assembly)
Bare Ribbon	12-fiber: FHM-12V 8-fiber: FHM-8	LYNX2-C(MT) (Plastic, Standard) *
Round Cord		or
Ribbon Cord		LYNX2-C(MT) Metal (Metal, Option)

\* 1 pc of LYNX2-C(MT) holder is supplied with every 100 connectors.

Sumitomo Electric Industries, Ltd.

Tokyo (Japan)  
Sumitomo Electric Industries, Ltd.  
<http://global-sei.com/fttx>

Hertfordshire (U.K.)  
Sumitomo Electric Europe Ltd.  
<https://sumitomoelectriceurope.com/>